

BRiffle DQ

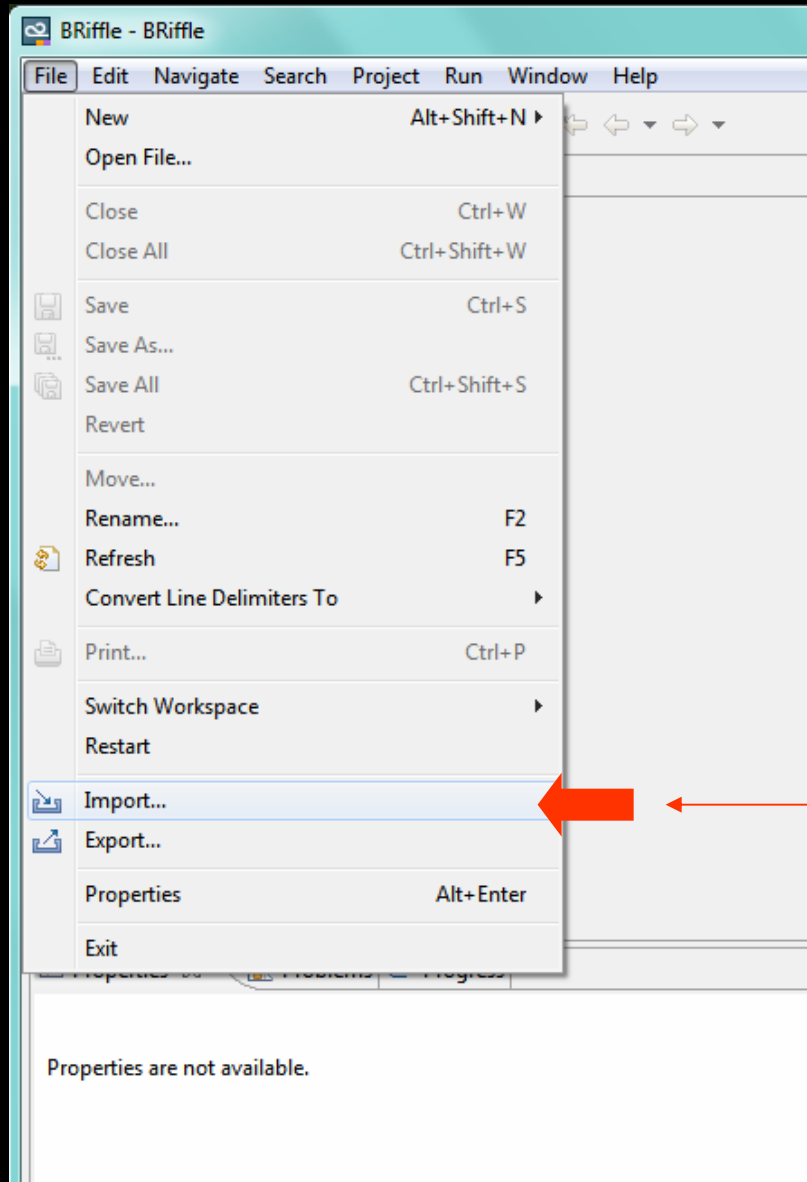
Open a provided sample

## Introduction

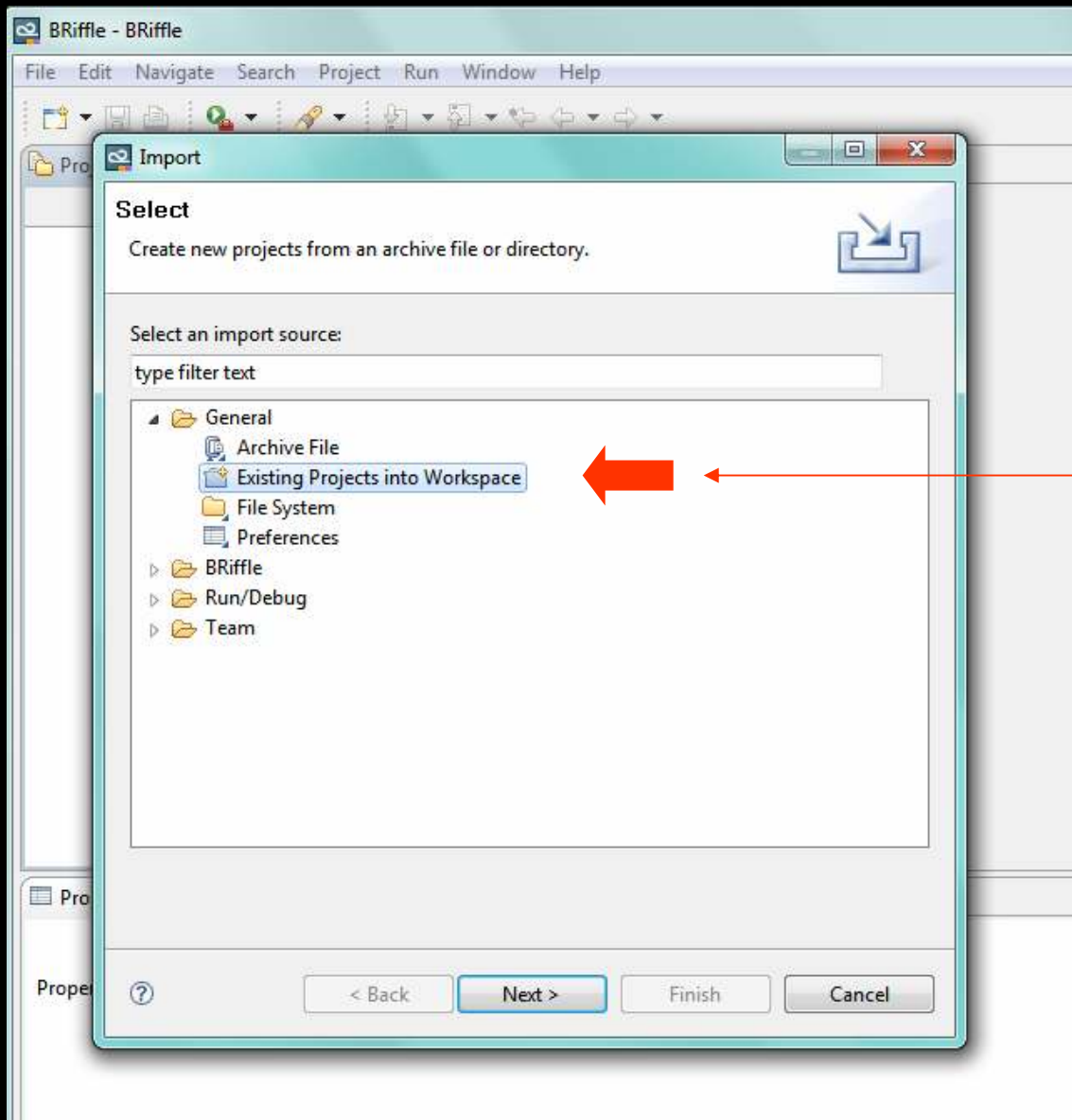
- The standard installation of BRiffle DQ provides several samples in the folder “samples” of your install
- To open a provided sample, you need to import the sample into your workspace
- The following slides explain how to import a sample and to compile it

- Steps:
  - 1- Import the sample into your workspace
  - 2- Open a sample
  - 3- Run the sample
  - 4- Compile the sample

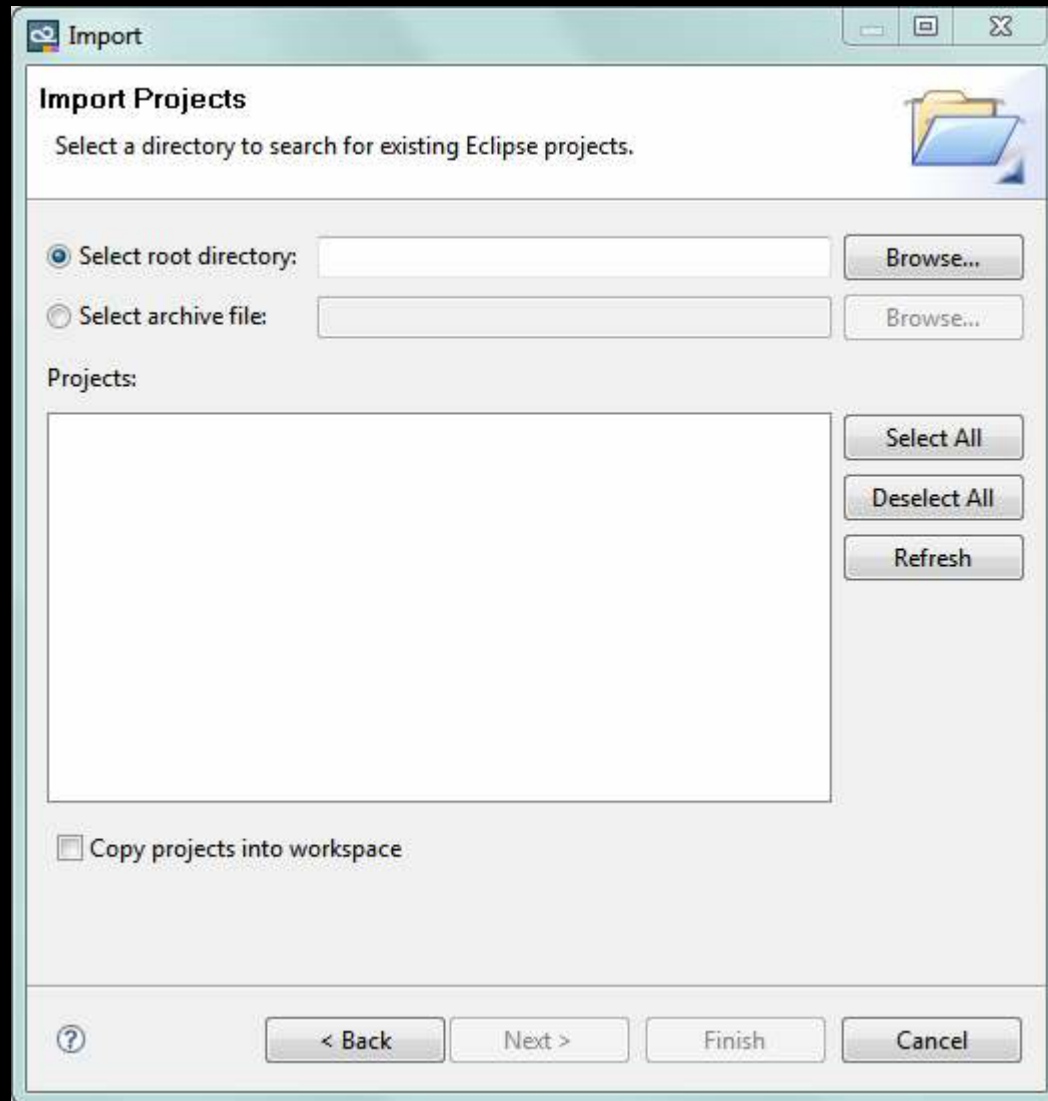
# 1- Import the sample into your workspace



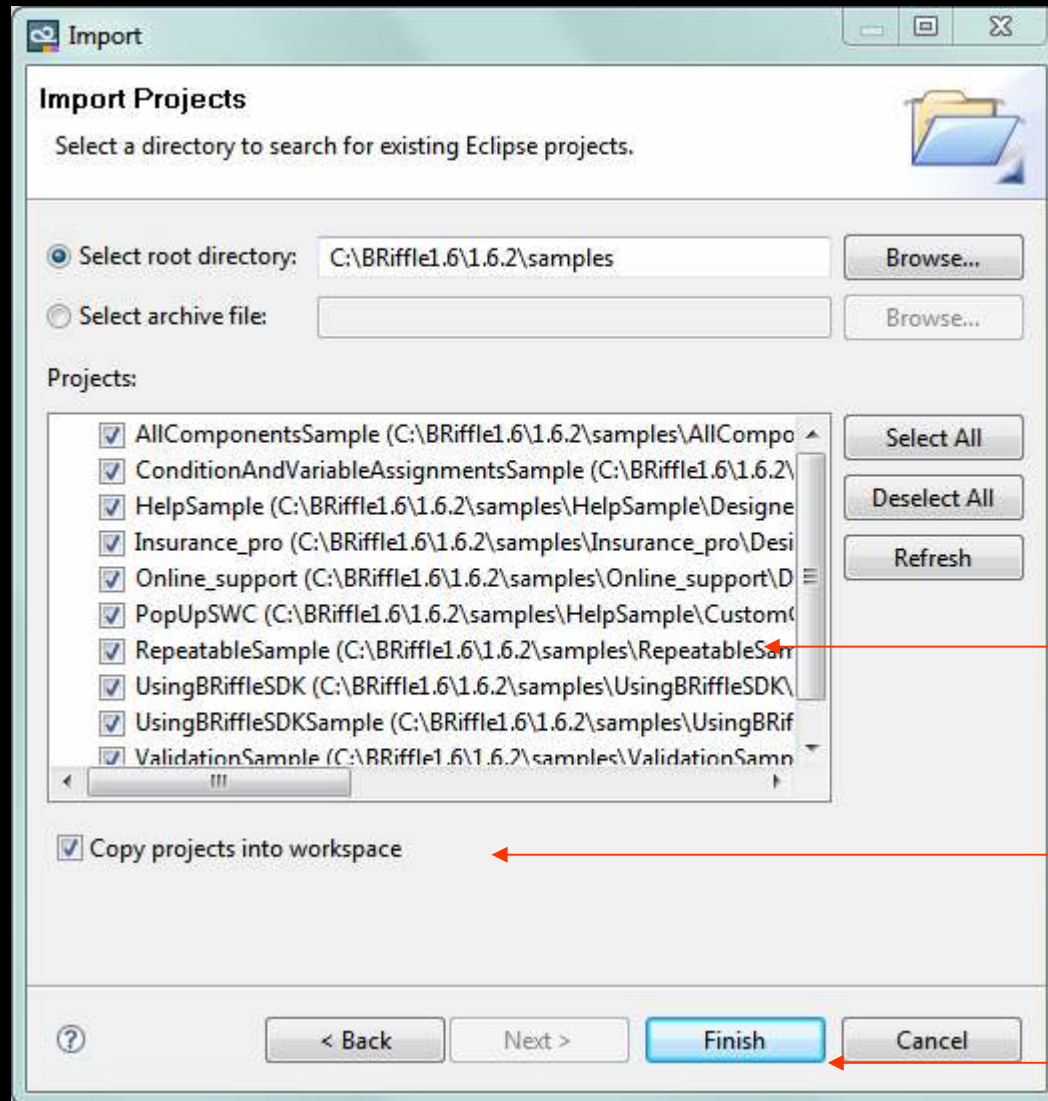
Menu **File** > select **Import**



Select: General > Existing Projects into Workspace



Click **Browse** and select the folder "samples" of the **directory** where you have installed BRiffle DQ



Eclipse lists all available samples.

1- Select "Copy" projects into workbench

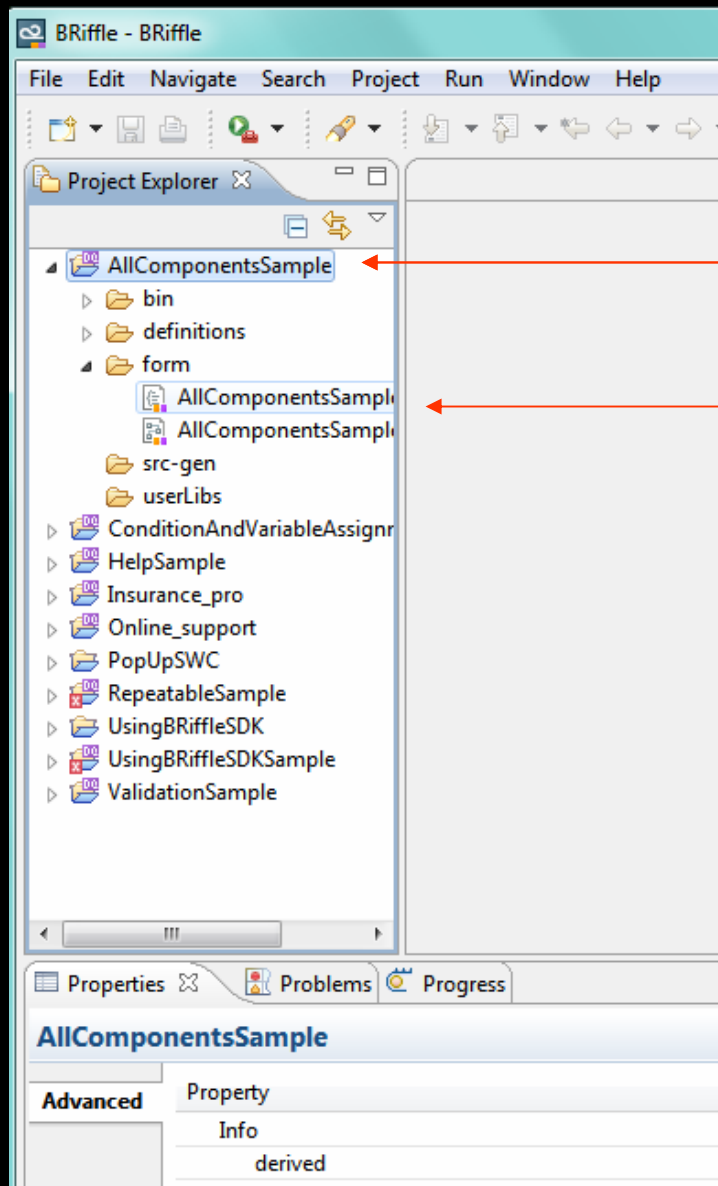
2- Click "Finish"

## 2- Open a sample

Each sample is a project.  
A project has a name and several folders.

The screenshot shows the BRiffle IDE interface. The Project Explorer on the left lists several samples: AllComponentsSample, ConditionAndVariableAssignr, HelpSample, Insurance\_pro, Online\_support, PopUpSWC, RepeatableSample, UsingBRiffleSDK, UsingBRiffleSDKSample, and ValidationSample. The Properties window at the bottom shows the properties for the selected 'AllComponentsSample' project.

Property	Value
Info	
derived	false
editable	true
last modified	29 novembre 2010 11:35:39
linked	false
location	C:\Users\younes\Documents\FR Local\Workspace\AllComponentsSample



1- Open the first project  
Open the "form" folder

2- Double click on the first file to  
display the questions

3- Double click on the second file to  
display the question flow

BRiffle - AllComponentsSample/form/AllComponentsSample.dyn - BRiffle

File Edit Navigate Search Project Run BRiffle Model Editor Window Help

Project Explorer

- AllComponentsSample
  - bin
  - definitions
  - form
    - AllComponentsSample.dyn
    - AllComponentsSample.dyngra
  - src-gen
  - userLibs
- ConditionAndVariableAssignmentsSan
- HelpSample
- Insurance\_pro
- Online\_support
- PopUpSWC
- RepeatableSample
- UsingBRiffleSDK
- UsingBRiffleSDKSample
- ValidationSample

AllComponentsSample.dyn

### Model AllComponentsSample

Define the application model in terms of Groups, Questions and Answers.

Item type	id	label	
DQ Model	defaultSizesAndStyl...		
Question Label	Label	Welcome to the this questionnaire...	LA
Question Radiobutton	Radiobutton	Radiobutton question	RA
Question Radiobutton_wit	Radiobutton_withT...	Radiobutton question with title	RA
Question Combobox	Combobox	Combobox question	CC
Question Textinput	Textinput	Textinput question	TE
Question Textarea	Textarea	Textarea question	TE
Question Exclusivecheckb	Exclusivecheckbox	Exclusive checkbox question	EX
Question Date	Date	Date question	DA
Question List	List	List question	LIS
Question Hslider	Hslider	HSlider question	HS
Question Vslider	Vslider	VSlider question	VS
Group Group1	Group1		
Group Group2_withBorder	Group2_withBorder		
Group GroupHBOX_Filled	GroupHBOX_Filled		
[New Element]			

Model Triggers Variables

Properties Problems Progress

Properties are not available.

Selected Nothing

BRiffle

Outline

- DQ Model

Here is a list of questions

BRiffle - AllComponentsSample/form/AllComponentsSample.dyngraph - BRiffle

File Edit Diagram Navigate Search Project Run Window Help

Tahoma 9 B I A 100%

Project Explorer

- AllComponentsSample
  - bin
  - definitions
  - form
    - AllComponentsSample.dyn
    - AllComponentsSample.dyngraph
  - src-gen
  - userLibs
- ConditionAndVariableAssignmentsSan
- HelpSample
- Insurance\_pro
- Online\_support
- PopUpSWC
- RepeatableSample
- UsingBRiffleSDK
- UsingBRiffleSDKSample
- ValidationSample

Navigation

Define the sequence in which the questions will appear in the Questionnaire

- DQ Model
  - Question Label
  - Question Radiobutton
  - Question Radiobutton\_withTit
  - Question Combobox
  - Question Textinput
  - Question Textarea
  - Question Exclusivecheckbox
  - Question Date
  - Question List
  - Question Hslider
  - Question Vslider
  - Group Group1
  - Group Group2\_withBorder
  - Group GroupHBOX\_Filled
- New nodes
  - Condition node

```
graph TD; Label --> Radiobutton; Radiobutton --> Radiobutton_withTitle;
```

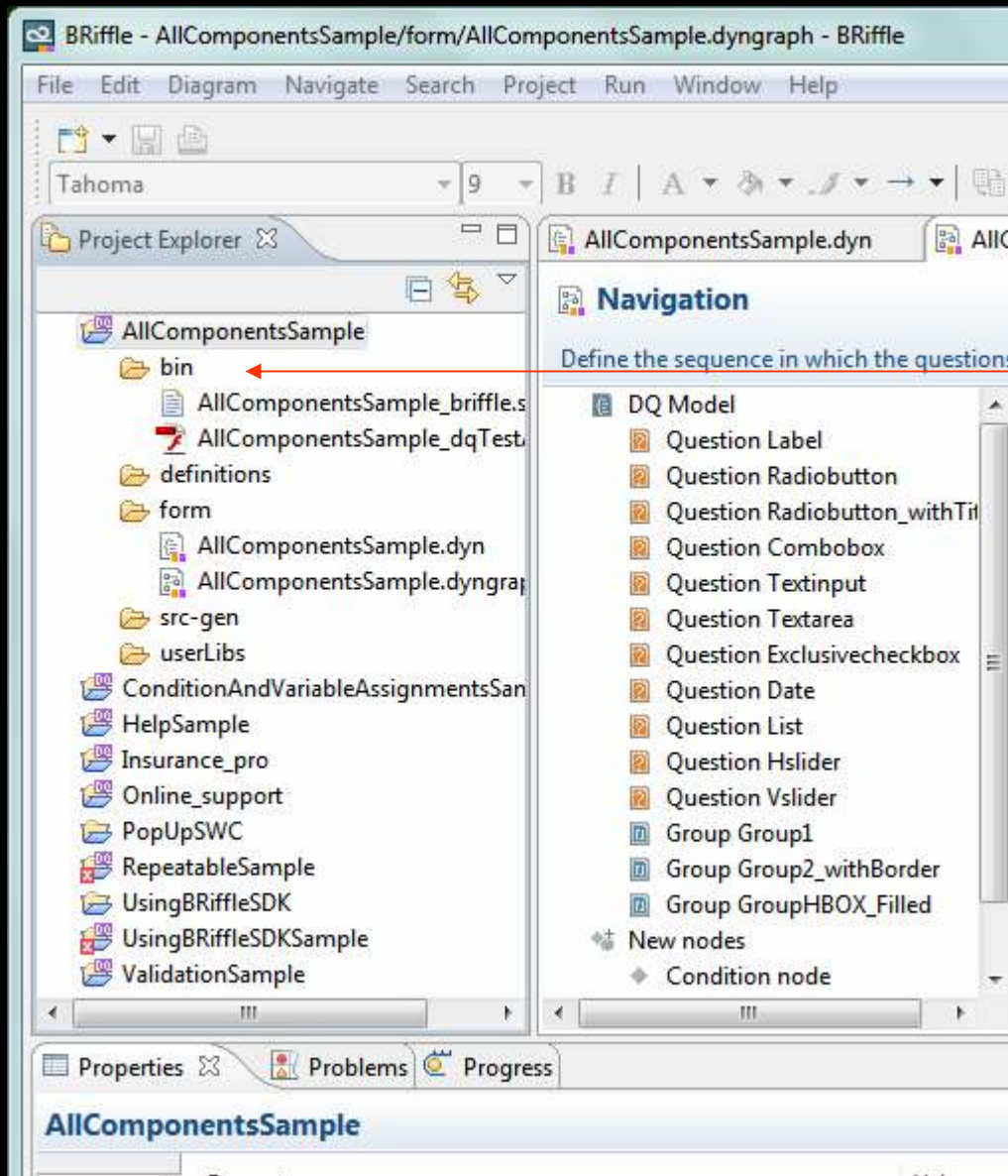
Properties Problems Progress

Diagram

Core	Property	Value
Rules & Grid		
Appearance		

Here is the question flow

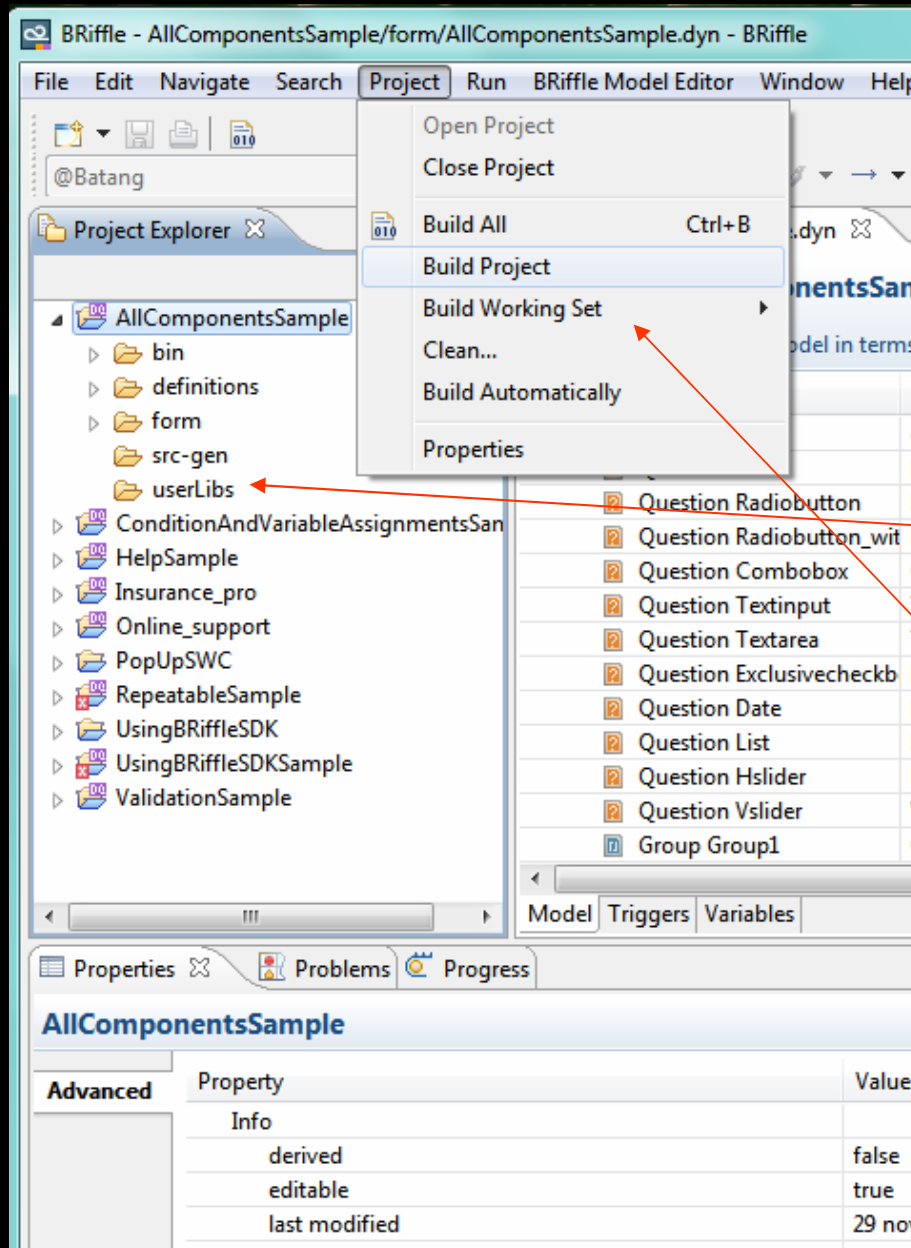
### 3- Run the sample



1- Open the folder "bin"

2- Double click on the "SWF" file  
(the 2<sup>nd</sup> one)

## 4- Compile the sample



1- Select a project

2- Menu "Project"

3- Deselect "Build Automatically"

4- Select "Build Project"

# flexriver

Rich Experience for Business Applications

[info@flexriver.com](mailto:info@flexriver.com)

[www.flexriver.com](http://www.flexriver.com)

**44, rue de la Rochefoucauld 75009 Paris**

**+33 (0)1 42 80 63 68**

